

Welcome!!



Partners in the Ridge to Rivers System

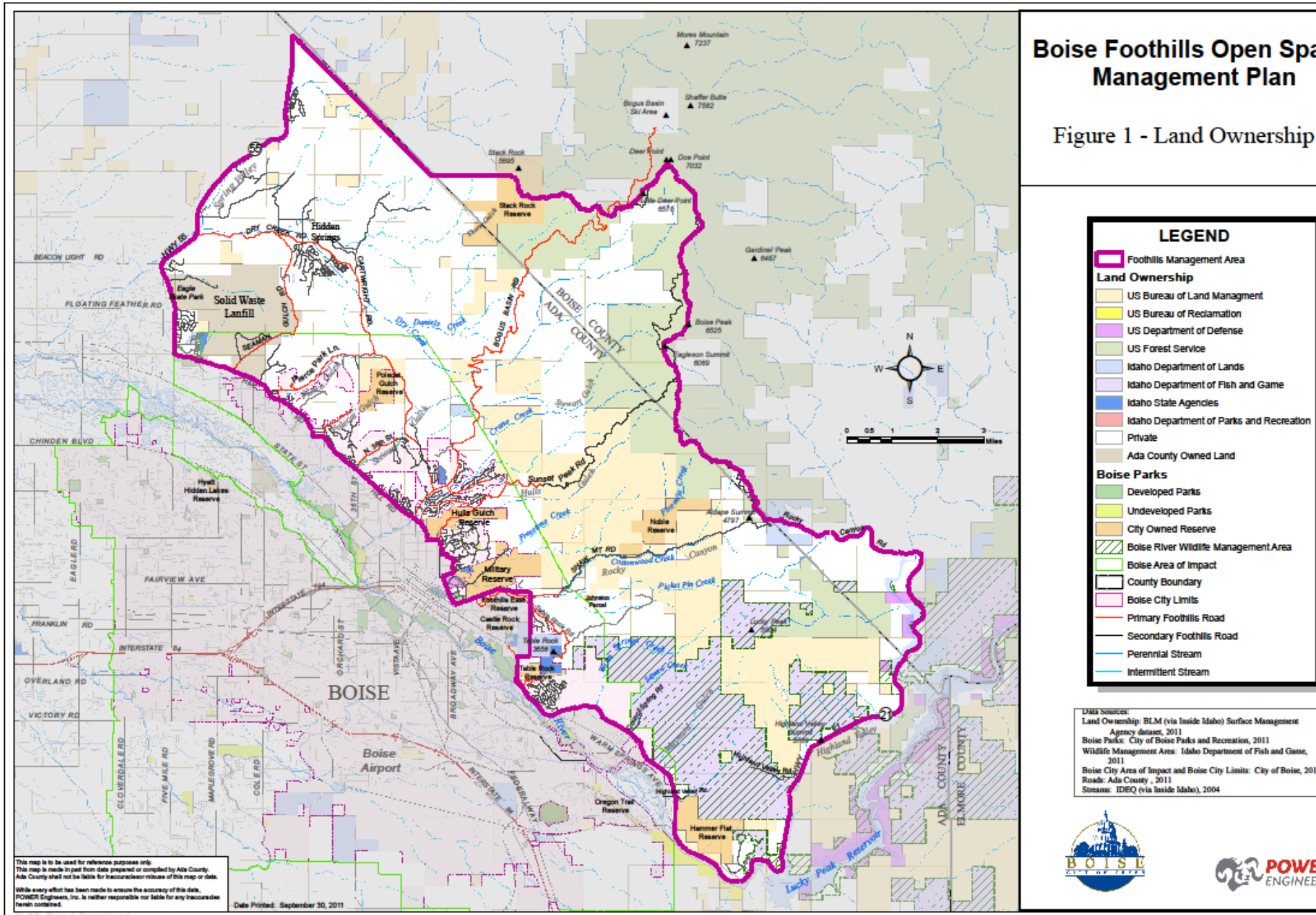
- The City of Boise – Lead Agency
- Ada County
- Bureau of Land Management
- U.S. Forest Service
- Idaho Fish and Game
- Private Landowners



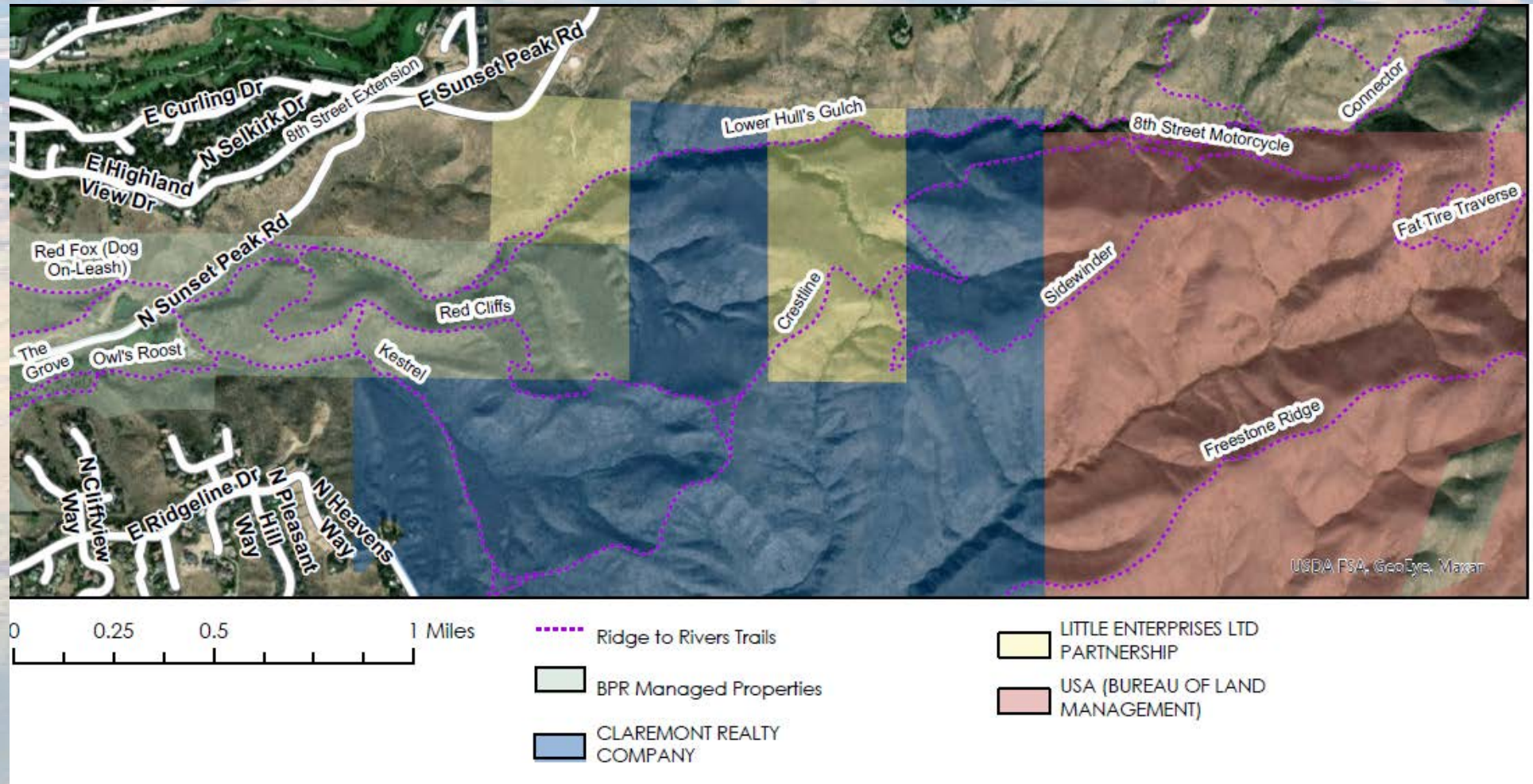
Overarching Goal

To provide a sustainable, seamless, high quality trail experience for all users, while also protecting the unique ecological, cultural and biological resources found in the Boise Foothills.

Figure 1 - Land Ownership



Hulls Gulch Area Ownership



Before We Can Build Any New Trails.....

We are required to ensure that additional trail mileage does not significantly impact other resource values – wildlife, sensitive plants, scenic, cultural.



Requirements For Any New Trails in the Foothills

On Public Land:

- National Environmental Policy Act (NEPA) analysis if trail is located on federal land
- Specialist review and public input if trail is located on City or County land
- No new trails allowed in Boise River Wildlife Management Area due to wildlife concerns (Idaho Department of Fish and Game)
- **On Private Land:**
- Landowner permission via easement – permanent or revocable

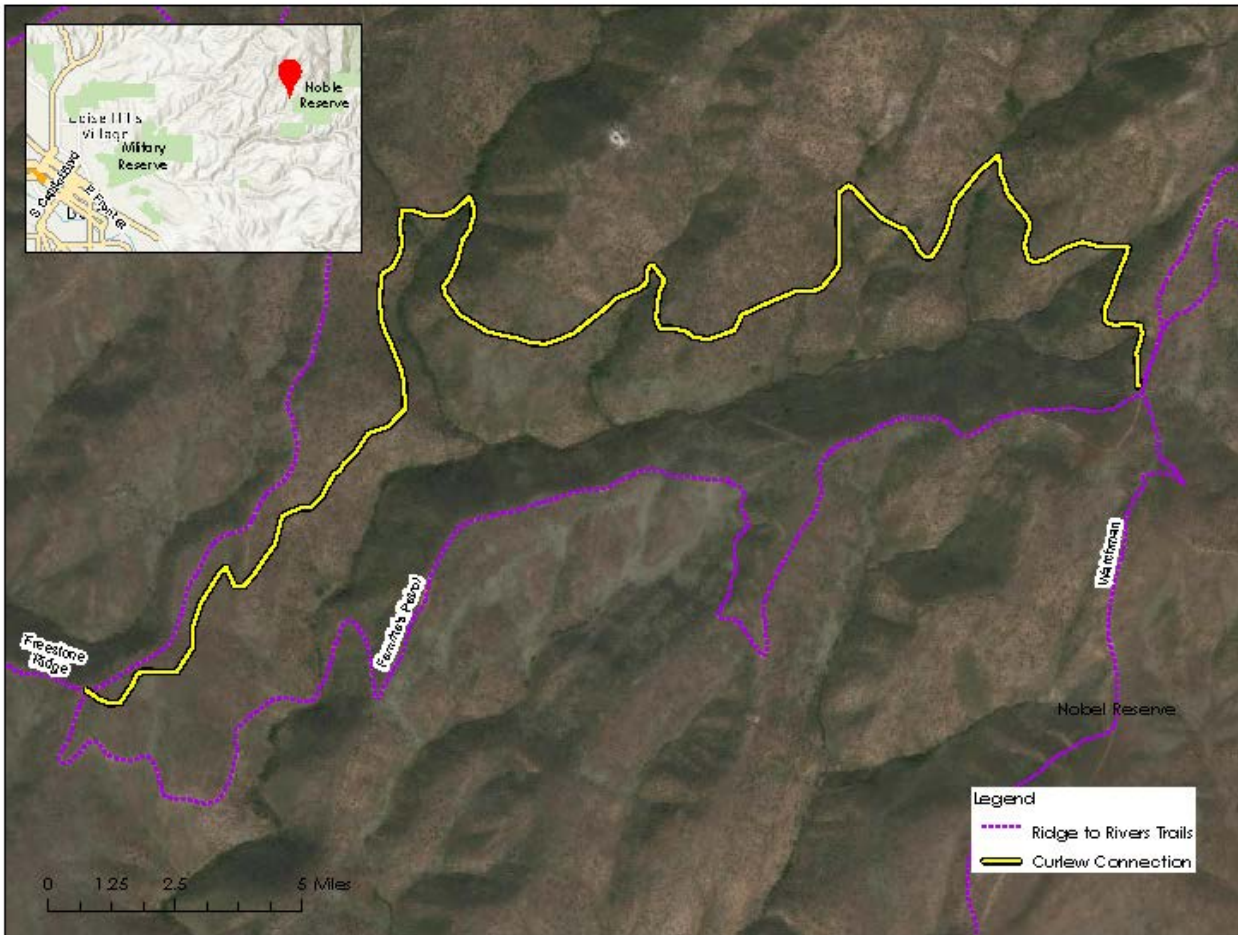
It is illegal to construct new trails or alter existing trails on public or private lands without authorization.



So...
New Trails Take Time...



Curlew Connection Trail

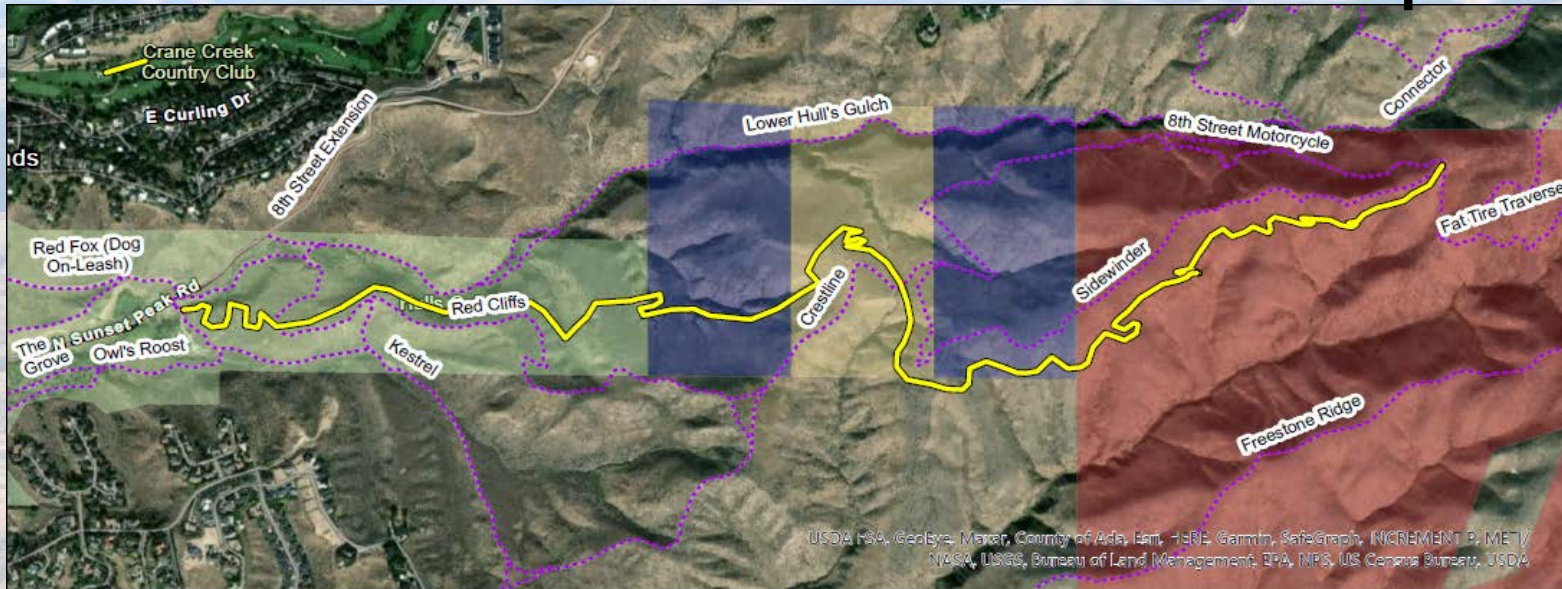


- **2018-2019** - Bureau of Land Management (BLM) Environmental Assessment: Favorable Decision
- **2019** – Decision appealed by various local conservation groups
- Currently awaiting BLM Washington Office Ruling

Hulls Area Purpose-Built Trail Concept

The map displays a proposed trail network in the Hulls area. A yellow line indicates the 'Proposed Flow Trail', which starts near Crane Creek Country Club and E Curling Dr, passes through Red Fox (Dog On-Leash), The N. Sunset Peak Rd, Owl's Roost, Kestrel, Red Cliffs, Crestline, Lower Hull's Gulch, Sidewinder, Freestone Ridge, Fat Tire Traverse, and ends near Connector. Purple dashed lines represent 'Ridge to Rivers Trails'. Land ownership is color-coded: CLAREMONT REALTY COMPANY (blue), LITTLE ENTERPRISES LTD PARTNERSHIP (yellow), USA (BUREAU OF LAND MANAGEMENT) (red), and BPR Managed Properties (green). A scale bar shows distances from 0 to 1 mile.

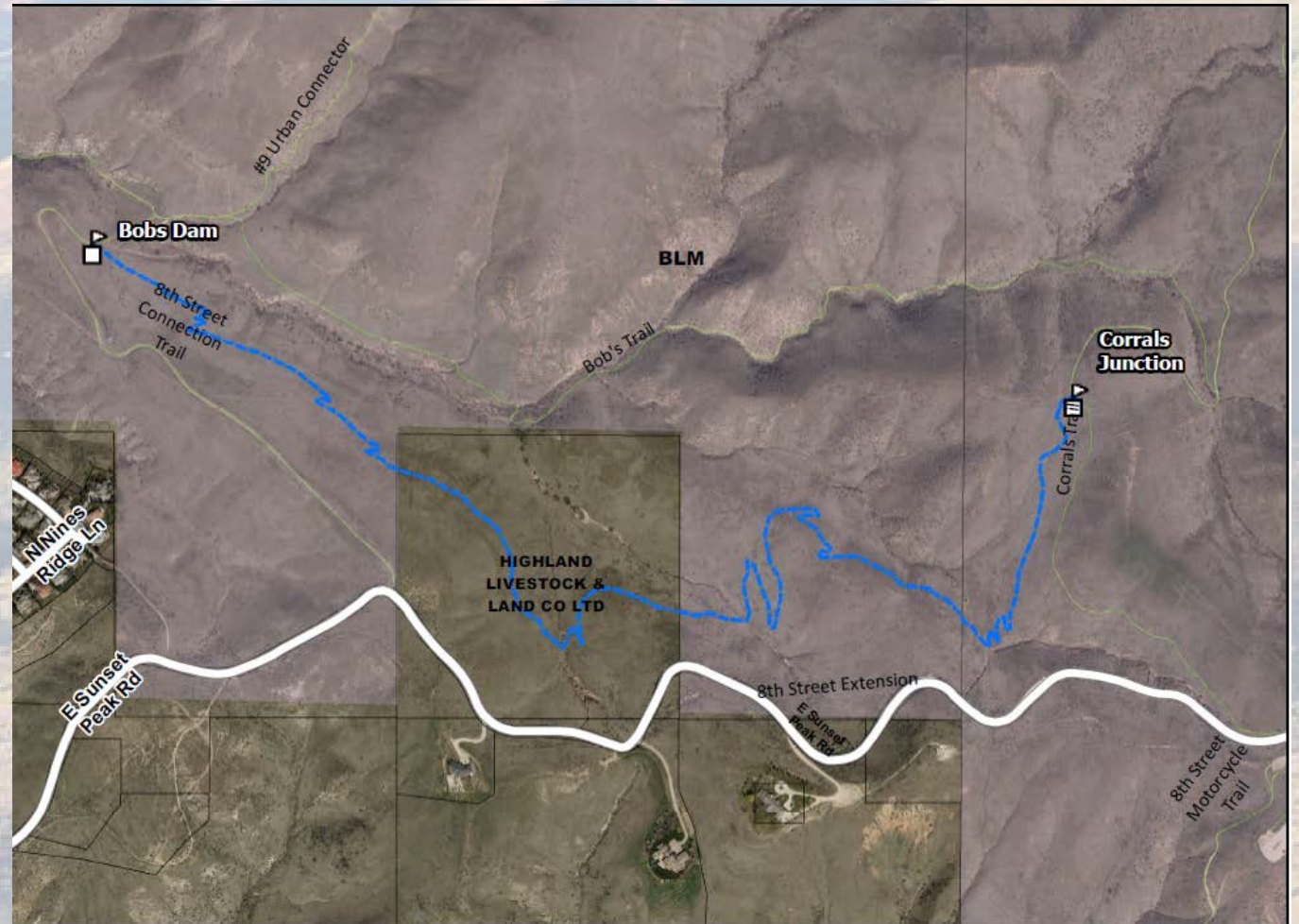
- Widely supported in 2016 Trail Plan
- Initial support from private landowners
- Subsequent reversal of support from a significant private landowner
- Impossible to construct without this easement



- Widely supported in 2016 Trail Plan
- Initial support from private landowners
- Subsequent reversal of support from a significant private landowner
- Impossible to construct without this easement

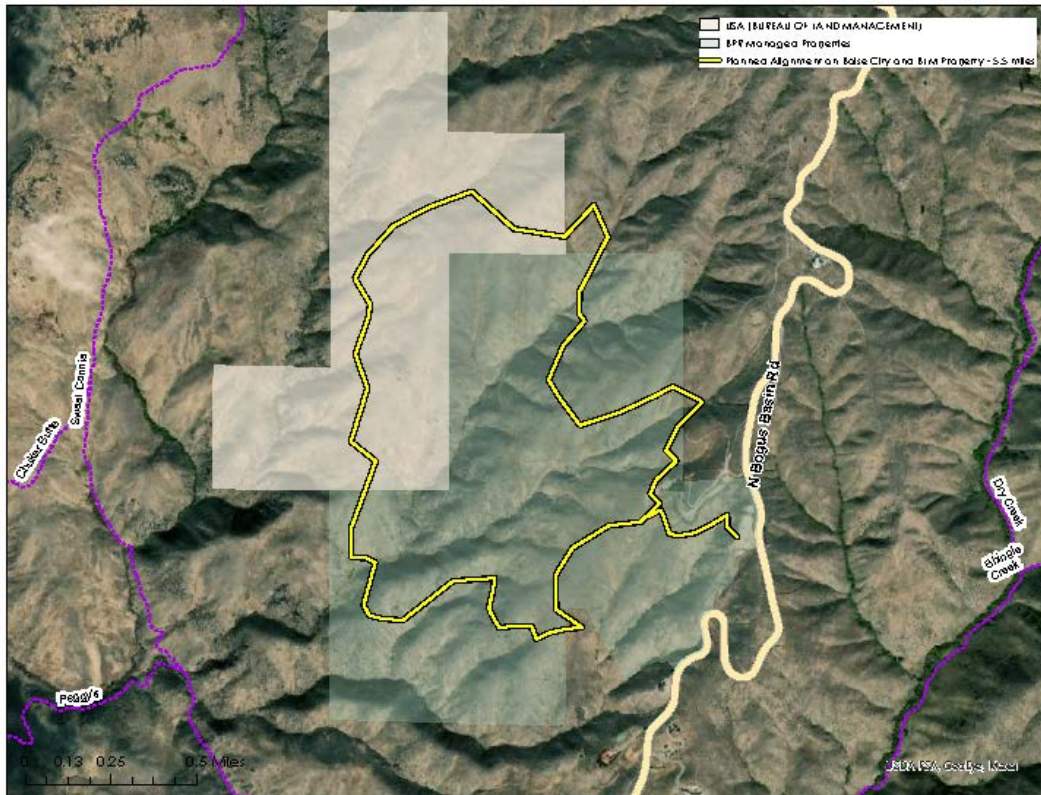
8th Street Purpose Built Trail

- **2018** - Easement obtained from Highland Livestock and Land Company, Ltd.
- **2018-2019** - Bureau of Land Management(BLM) Environmental Assessment: Favorable Decision
- **2019** – Decision appealed by various local conservation groups
- Currently awaiting BLM Washington Office Ruling



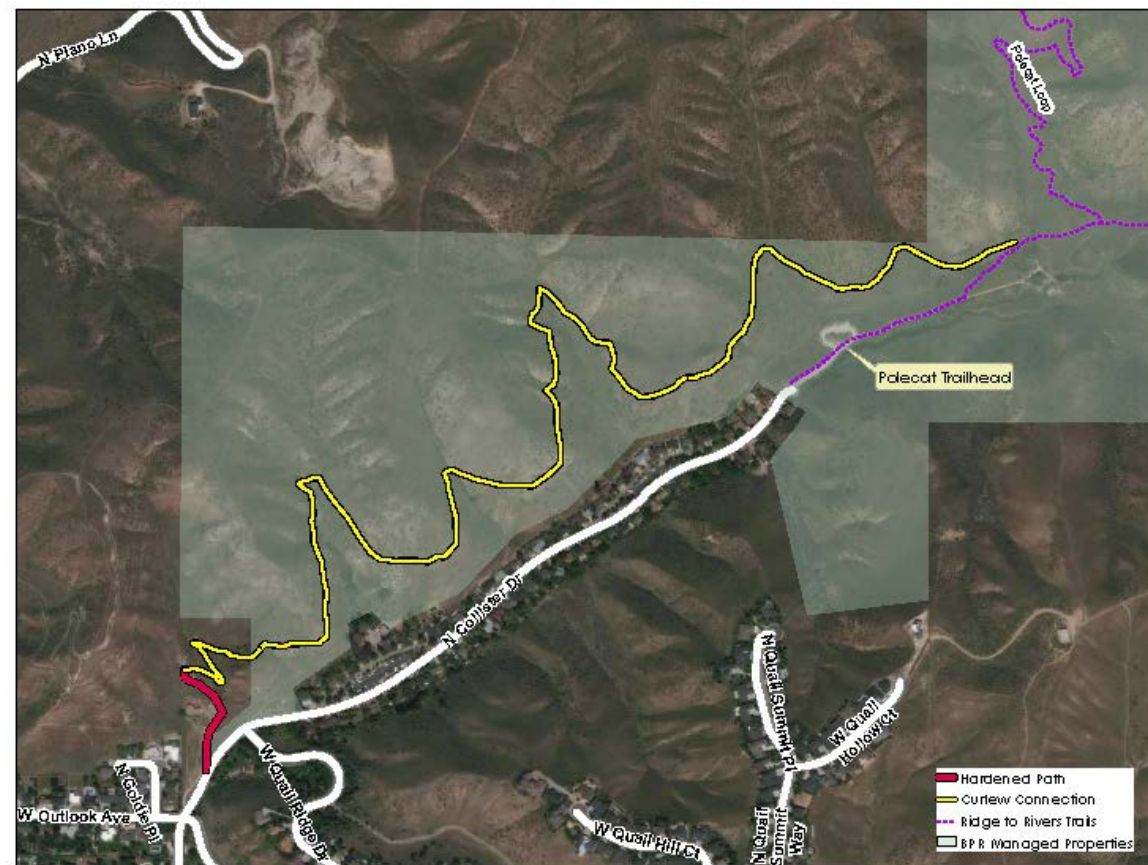
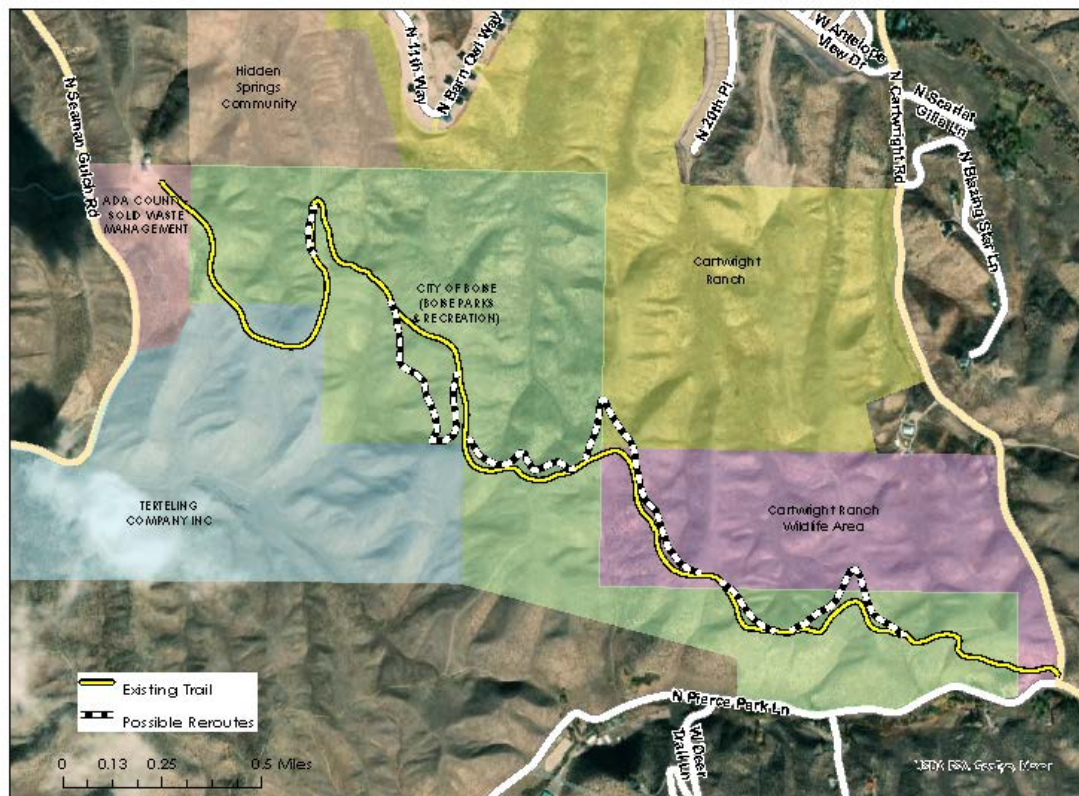
Trails Coming Soon(er)

Hawkins Loop



Fort Boise Trail

Cartwright Ridge



Collister Connection

Current Situation

- 90% of our trail system is non-motorized shared use
- Since March 2020, use has doubled or tripled in many locations on our trail system (COMPASS)



Non-Cyclists Have Safety Concerns on Heavily Traveled Trails Shared with Cyclists



Cyclists Would Like To See Some Single Use Trail Opportunities



Heavy Off-leash Dog Use Has Led to Vegetation Loss, Trail Braiding and Proliferation of Dog Waste

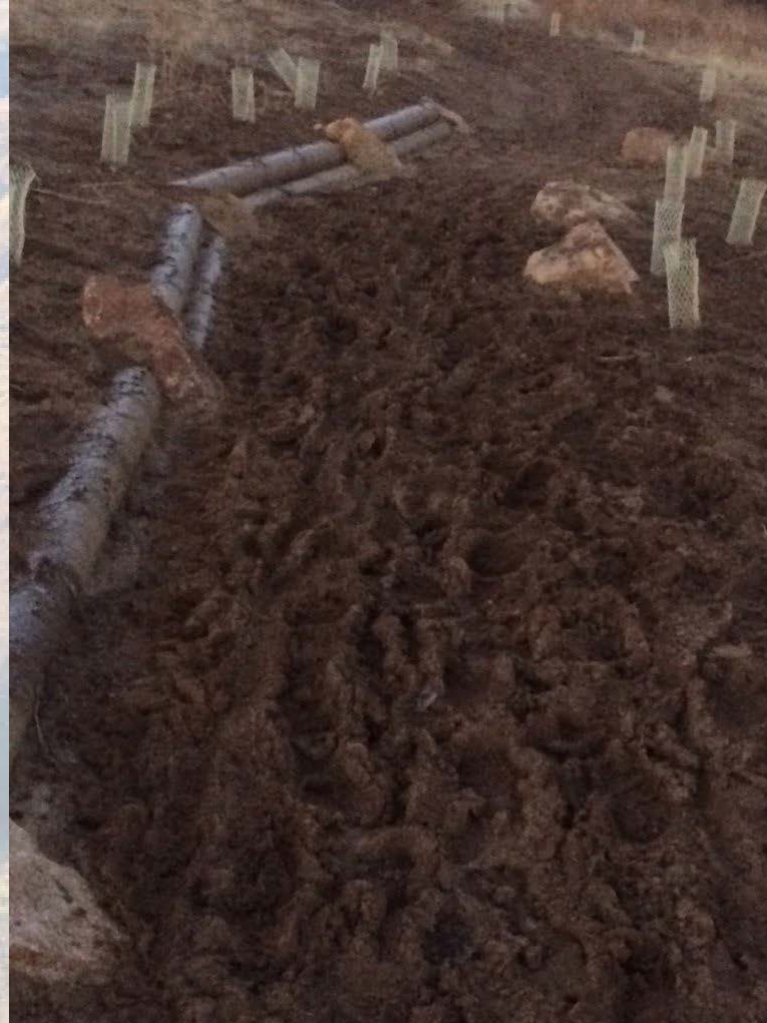


Trail Quality is Deteriorating Under the Pressure



Especially During Winter Months

Kestrel Trail
1/19/2021



Possible Solutions....

New Trails

- The Best Solution When Possible



New Strategies on Existing Trails

- Directional Trails
- Separation of Use
 - Different Days For Different User Groups
 - Monthly or Seasonal Restrictions
- Pilot Period
 - April – November 2021



Which Trails?



- Heavily Used
- Poor Visibility
- Few trail junctions

Possible Trails for New Management Strategies

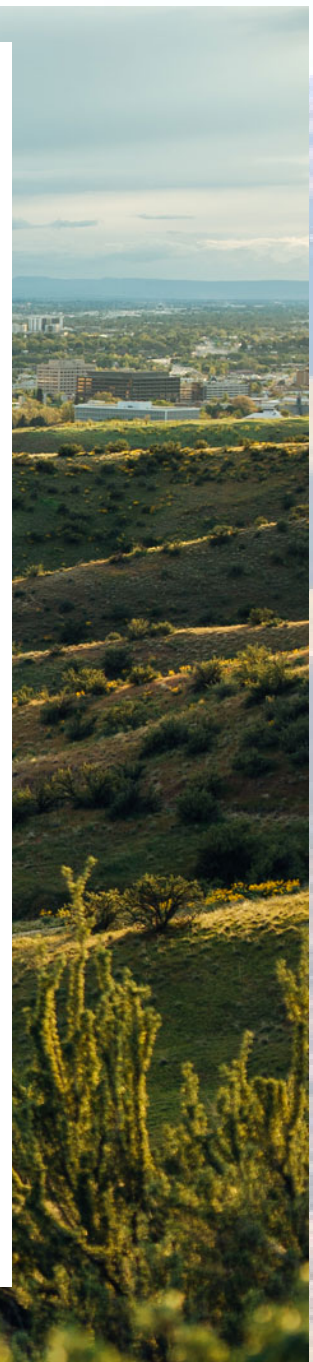
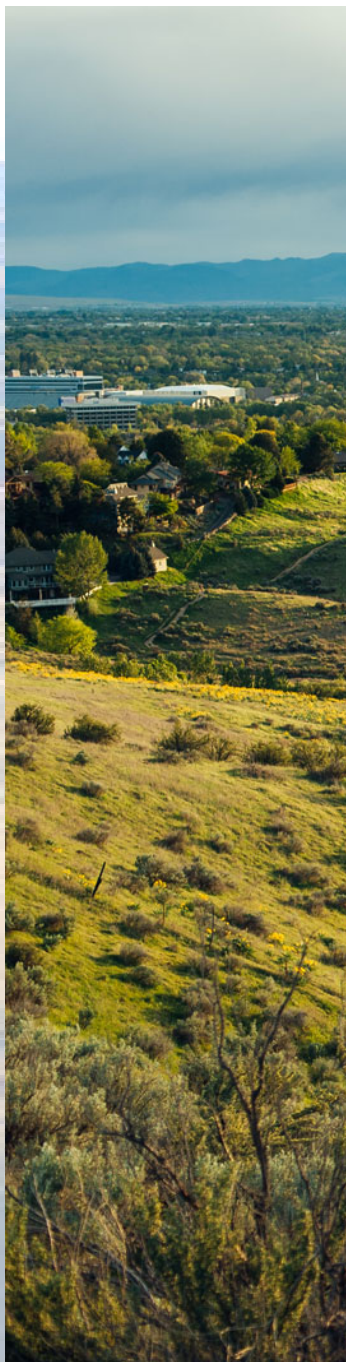
- Lower Hulls Gulch
- Around the Mountain
- Polecat Loop
- Bucktail Trail



An aerial photograph of a vast, hilly landscape. The terrain is covered in dry, golden-brown grass, with some patches of green. In the distance, a range of mountains is visible under a clear blue sky. The hills are rolling and undulating, creating a sense of depth and scale.

Help Us Determine The Best Way
to Move Our Trail System Forward

**Take the Survey Coming Your
Way!**



Let's All be Part of Effective and Positive Solutions

